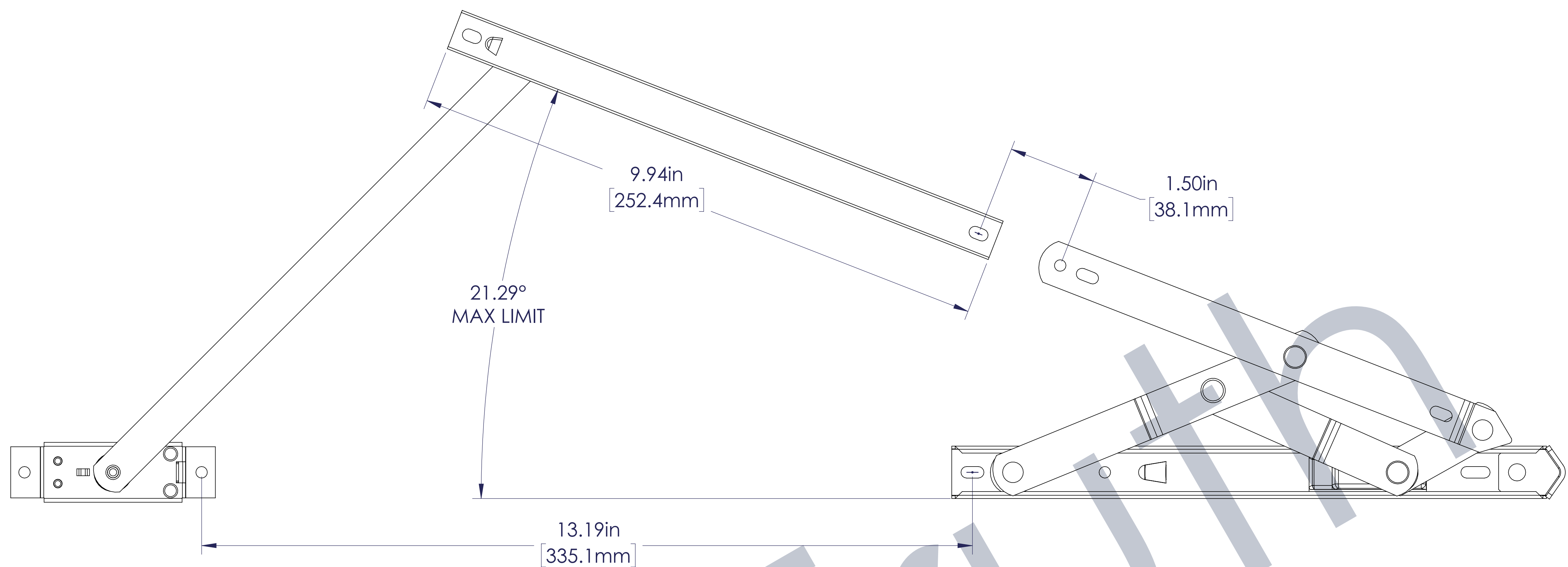
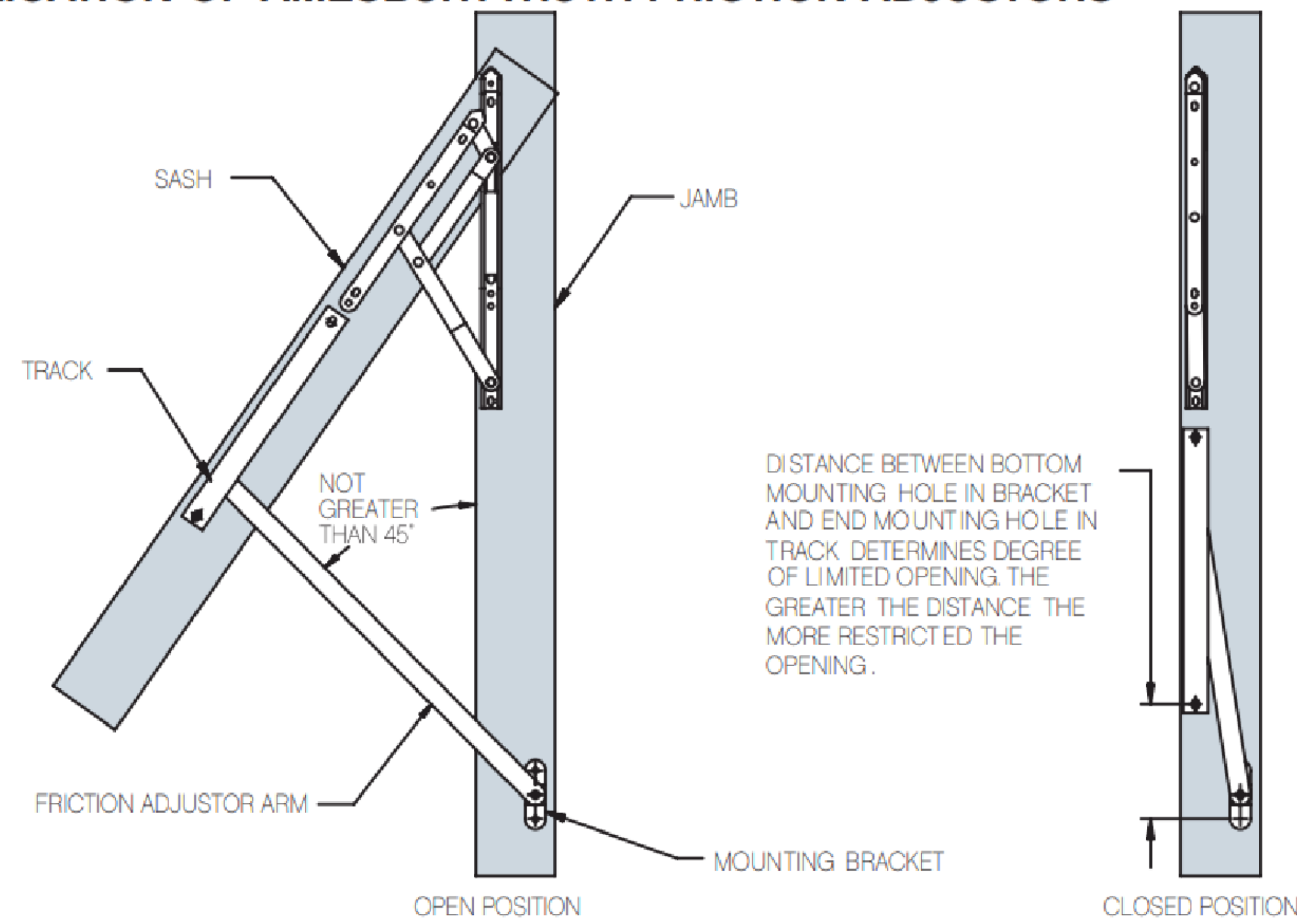
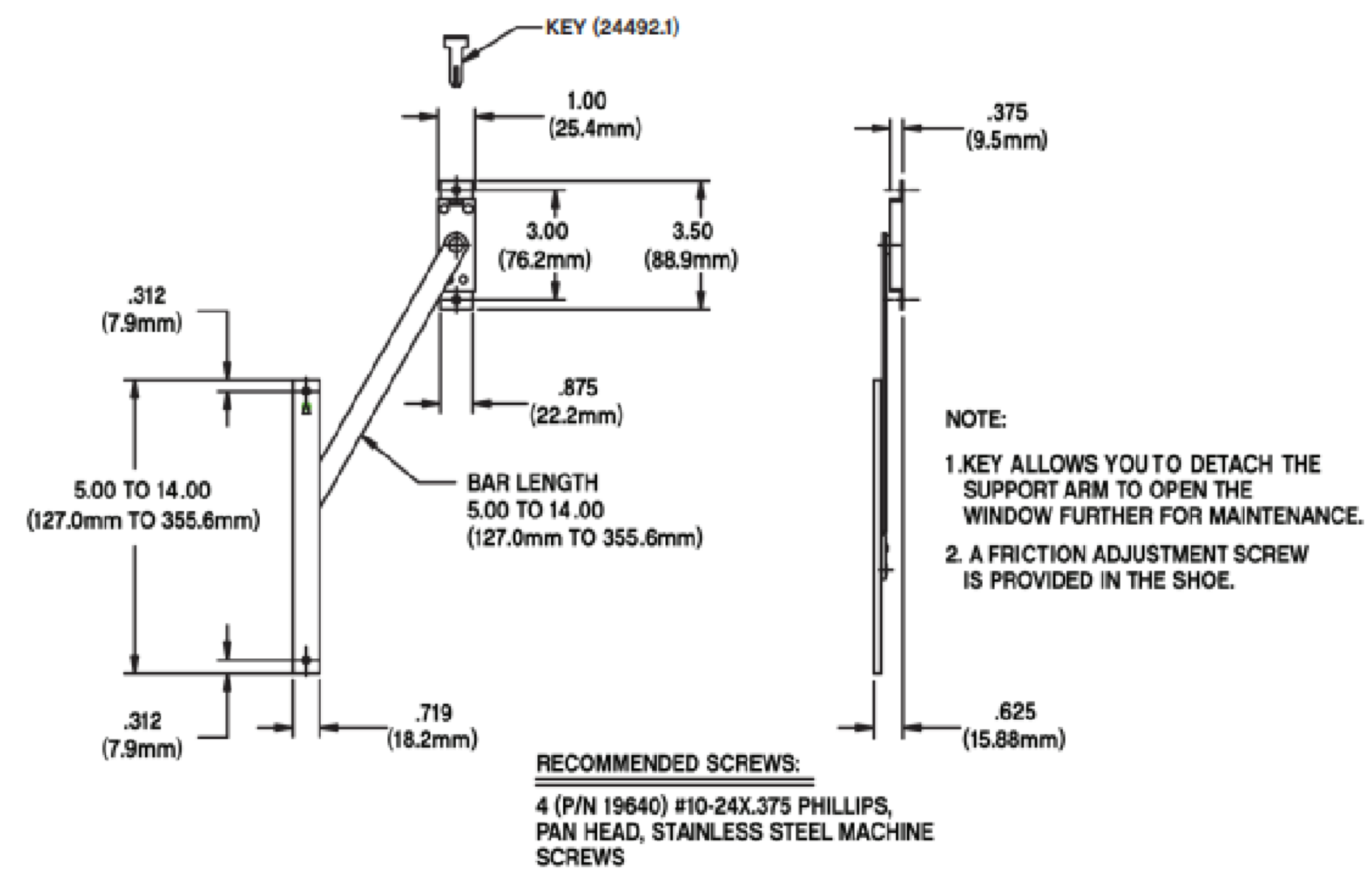


FIG. 1 APPLICATION OF AMESBURYTRUTH FRICTION ADJUSTORS



37.31.00.300.1 SHOWN PAIRED WITH 34.24.00.208.1 HINGE. DISTANCES FROM HINGE MAY VARY WITH WINDOW HEIGHT AND HINGE USED.

FIG. 4 AMESBURYTRUTH LIMIT DEVICE WITH KEY RELEASE (Anderberg FA220SS Series)



LIMIT DEVICE WITH THE KEY RELEASE FEATURE (See Fig. 4)		
PART NUMBER	TRACK LENGTH*	ARM LENGTH
37.26	5" (127.0mm)	5" (127.0mm)
37.27	6" (152.4mm)	6" (152.4mm)
37.28	7" (177.8mm)	7" (177.8mm)
37.29	8" (203.2mm)	8" (203.2mm)
37.31	10" (254.0mm)	10" (254.0mm)
37.33	12" (304.8mm)	12" (304.8mm)
37.34	14" (355.6mm)	14" (355.6mm)

- The Heavy Duty Friction Adjustor is the only one of these products that has the option of different bracket heights. If a bracket is not specified it comes with the standard .235 (6.0mm) bracket. For other available brackets see the table in figure 2.
- The accompanying tables show the options available to you in the selection of the limit device or friction adjustors required for your specific application.

